



Assemblage

Katia Bulbenko

KS2-3

Jayne Stillman

Final version

© Hampshire County Council





Assemblage is...

a work of art made by grouping together found or unrelated objects.

About Katie Bulbenko

She lives in Weehawken, NJ, a small town on the Hudson River, USA.

She describes herself as 'A lifelong artist'.

Education: She studied at Tyler School of Art in Philadelphia and Rome, Italy.

Her inspiration is nature, landscapes and erosion.

In her work she likes to use organic shapes. She works intuitively and experimentally and considers composition, colour, texture and balance in her work.

Find out more: www.katiabulbenko.com

Her abstract works are related to nature and landscape.

Her layered assemblages include upcycled materials, wood, canvas, paper, felt, and beads.



Katia Bulbenko



Rosso



Ambient



Roam



Detail of Ambient



Lakeside

Journeys:

Some ideas for you to investigate assemblage.

1. Look at the work of the artist Katia Bulbenko.
2. Be creative, and plan ideas for your own assemblage. You could go on a trip around your house or a walk around your garden or nearby, look in cupboards, find magazines, take photos and get permission to use found things.
3. Look at the things you have collected. Is there a colour theme, object theme or something of interest to you. Arrange things and photograph. Do you need to add other things or create coloured pieces to insert? Take another photograph.
4. Decide how you could combine and permanently assemble your objects. You could stick, stitch, staple, nail etc.
5. Try out combining some bits before you finally fix them. Photograph these.
6. Write some notes about your use of:
Colour/Tone/Shape/Line/Texture/Pattern/ Form and Space.
7. You could draw or paint a section or all of your assemblage – see Katia Bulbenko's work on the next slide to inspire you.

Materials:

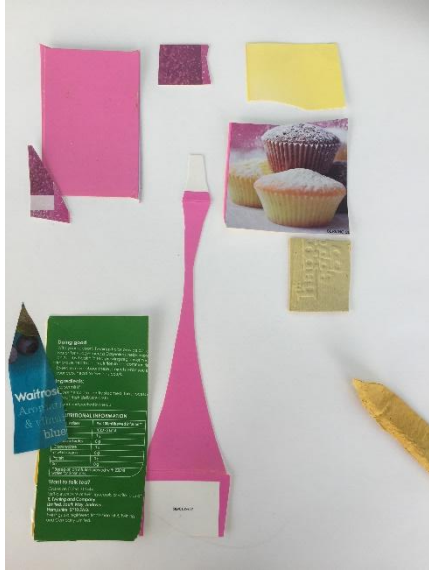
- A collection of found pieces, a camera, glue, scissors, masking tape, stitching materials (needle and thread), stapler etc. drawing or painting materials, collage materials, paper or card.

Things I collected over the Easter 2020 weekend!

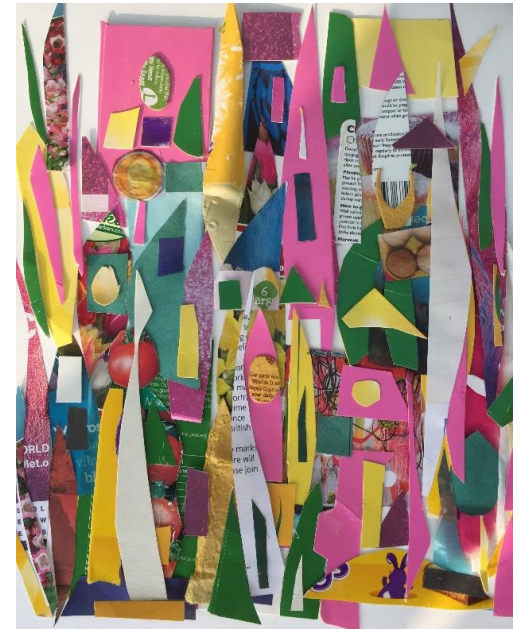


Inspired by Katia Bulbenko's artwork, I cut shapes from the things I collected.





I then placed and arranged the cut pieces onto a sheet of paper and continued to layer these up and over each other. You can stick as you go.



Colour / Tone / Shape / Line / Texture / Pattern

Colour: I have used a variety of yellows, pinks, greens, blues and some black and white to create my assemblage.

Tone: My work has strong and bold tones.

Shape: I cut the larger pieces of cards and papers into 'shard' shape pieces, I also cut some regular and irregular shapes including egg shapes that reflected that I made it over Easter and that I was also baking!

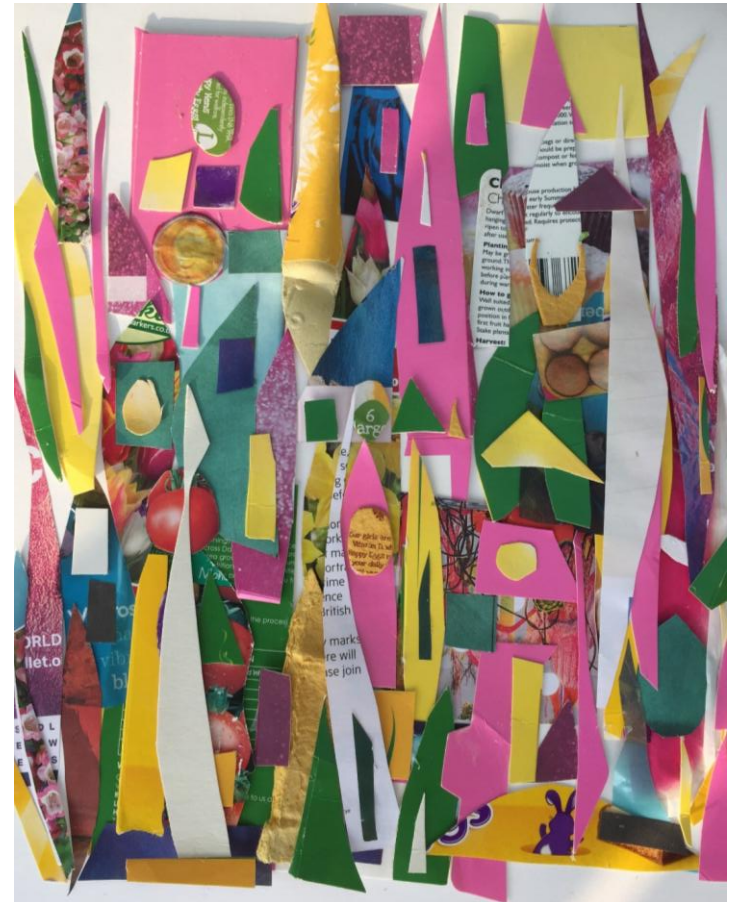
Line: I did pencil and pen line drawings of my assemblage.

Texture: Some of the pieces I collected were rough and bumpy and other smooth and glossy to touch.

Pattern: When I arranged my work I was thinking of layering the papers and shapes to create a pattern similar to buildings in a cityscape.

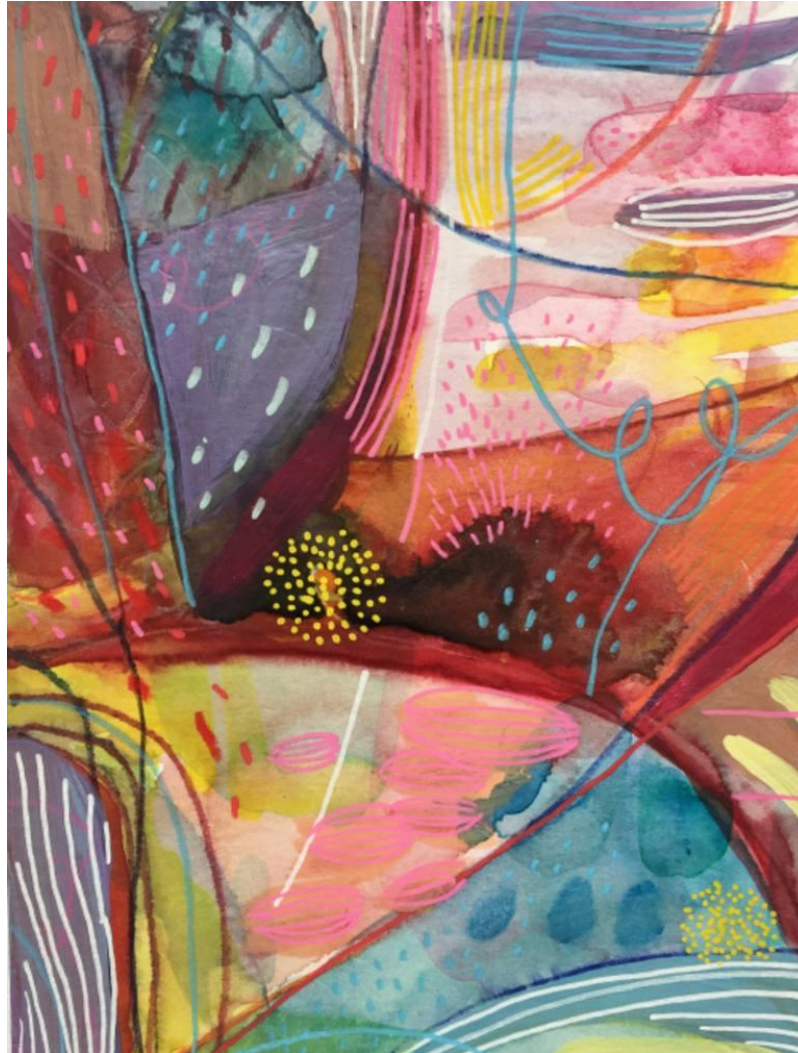
Form: My work is mainly two- dimensional but I do have some raised three dimensional pieces such as the section of an egg carton.

Space: As I created my composition I thought about the space between the pieces. As I layered my work I thought about the arrangement using the whole space of my A3 page.



Journeys: Investigating Assemblage

Painting of her assemblage – Horizon by Katia Bulbenko



Drawing and Painting of my Assemblage

I chose to draw different sections of my work and do a pen & wash study and a watercolour study.

I selected a section of my assemblage and drew an outline in pencil.

Using a black handwriting pen I went over the pencil outline. Following this I used a paintbrush with some water to lightly wash over the line to create a 'washed' effect.



I selected a section of my assemblage and drew a light outline in pencil.

Using watercolour paints I gradually painted my drawing.

I matched and mixed the colours first and tried them out before painting the different shapes.

I also used watercolour pencils in some places to give sharp outlines and some shadow.

You might chose to do something else rather than a drawing or painting. You could take a photograph of your work and then cut and stitch into it, you might do a collage or whatever inspires you. Have fun and enjoy.

Journeys: Investigating Assemblage

- Collect up your artwork for this project and put it together to show your new art teacher when you get to secondary school.
- Write any thoughts about how your work was inspired by Katia's and what you might do next.

Art

Jayne Stillman

jayne.stillman@hants.gov.uk

For further details on the full range of services available please contact us using the following email: htlcdev@hants.gov.uk

Upcoming Courses

Keep up-to-date with our learning opportunities for each subject through our Upcoming Course pages linked below. To browse the full catalogue of learning offers, visit our new Learning Zone. Full details of how to access the site to make a booking are provided [here](#).

- [English](#)
- [Maths](#)
- [Science](#)
- [Geography](#)
- [RE](#)
- [History](#)
- [Leadership](#)
- [Computing](#)
- [Art](#)
- [D&T](#)
- [Assessment](#)
- [Support Staff](#)
- [SEN](#)
- [TED](#)
- [MFL](#)

Terms and conditions

Terms of licence

This file is for personal or classroom use only. By using it, you agree that you will not copy or reproduce this file except for your own personal, non-commercial use. HIAS have the right to modify the terms of this agreement at any time; the modification will be effective immediately and shall replace all prior agreements.

You are welcome to:

- download this resource
- save this resource on your computer
- print as many copies as you would like to use in your school
- amend this electronic resource so long as you acknowledge its source and do not share as your own work.

You may not:

- claim this resource as your own
- sell or in any way profit from this resource
- store or distribute this resource on any other website or another location where others are able to electronically retrieve it
- email this resource to anyone outside your school or transmit it in any other fashion.